

LED STREET LIGHTS

**RESELLERS OF OUR PRODUCTS ARE
AVAILABLE NATION WIDE.**

FOR RESELLER QUERIES AND WHOLESAL PRICELISTS / DISCOUNTS
PLEASE CONTACT OUR HEAD OFFICE.



DIE CAST STREET LIGHTS

24 WATT - 48 WATT

PRODUCT CODES

24STR220-DC

28STR12DC

36STR12-DC

36STR220-DC

48STR12-DC

PRODUCT DESCRIPTION

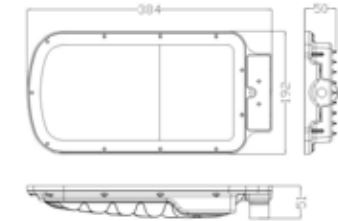
This design features a die cast aluminium housing with tempered glass cover. Internal LED Driver. Secondary Asymmetrical Optics. A suitable replacement for 70 Watt conventional HID. EXCELLENT POWER SAVING!

Typical applications:
Street Lights, Security Lights, Area Lighting.

Lensed technology eliminating light pollution and wasted light. There is 100% output the moment the light is switched on, no warm-up or strike delays.

Mounting: Spigot entry 38-44mm Pipe
Surge and Lightning Protection Replaceable Fuse

- 5 YEAR GUARANTEE
- LOCALLY MANUFACTURED
- SABS TESTING IN PROGRESS



SPECIFICATION SUMMARY

Rated Power:	24W (110VAC/220VAC)	28W (12VDC)
	36W (110/220VAC / 12VDC)	48W (12VDC)
Light output:	2540lm (24W)	2951lm (28W)
	3800lm (36W)	2700lm (48W)
Colour:	Warm White or Neutral White or Cool White	
LED Technology:	Seoul LED	
IP Rating:	IP65	
Rated Lifetime:	> 80 000 HRS	
Beam Angle:	60°vertical x 115°horizontal	
Weight:	1.8 Kg	
Dimensions:	384mm x 192mm x 46mm	



DIE CAST STREET LIGHTS

30 WATT - SOLAR

PRODUCT CODES

38STR12-SOL

PRODUCT DESCRIPTION

This design features a die cast aluminium housing with tempered glass cover. Internal LED Driver. Wide input voltage 12-24 VDC. Secondary Asymmetrical Optics. A suitable replacement for 100 Watt conventional HID. EXCELLENT POWER SAVING!

Typical applications:
Street Lights, Security Lights, Area Lighting.

Lensed technology eliminating light pollution and wasted light. There is 100% output the moment the light is switched on, no warm-up or strike delays.

Mounting: Spigot entry 38-44mm Pipe
Surge and Lightning Protection Replaceable Fuse

- 5 YEAR GUARANTEE
- LOCALLY MANUFACTURED
- SABS TESTING IN PROGRESS



SPECIFICATION SUMMARY

Rated Power:	30W (12VDC)
Light output:	3635lm
Colour:	Warm White or Neutral White or Cool White
LED Technology:	Seoul LED
IP Rating:	IP65
Rated Lifetime:	> 80 000 HRS
Beam Angle:	45°vertical x 115°horizontal
Weight:	1.8 Kg LED Solar Street Light Total headload = 65Kg
Dimensions:	384mm x 192mm x 46mm
Solar:	PV Panel: Enersol120W Poly-Crystalline Panel Battery: Vision AGM 100 Ah battery Discharge per 12 hours: 36% over 12 hours on time / night



SERIES 4 STREET LIGHTS

24 WATT

PRODUCT CODES

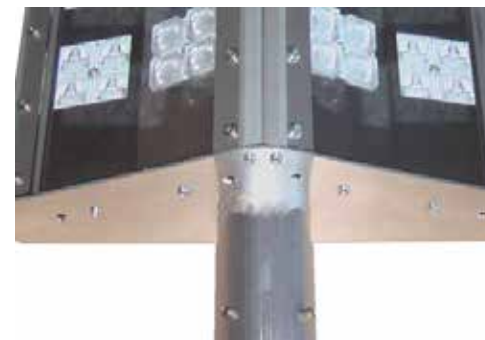
24STR12-S4

PRODUCT DESCRIPTION

24W 12 VDC LED Street Light in an anodised aluminium housing with a ultra high impact poly-carbonate cover. The LED Street Light is a locally developed OEM design to replace the 50W S3 COB LED Flood lights and a good substitute for the conventional 70W HID street light awarding the user with up to 67% energy cost savings and extended lifetime benefits. Lensed technology eliminating light pollution and wasted light. There is 100% output the moment the light is switched on, no warm-up or strike delays.

Mounting: Spigot entry 38-44mm Pipe
Surge and Lightning Protection Replaceable Fuse

- **5 YEAR GUARANTEE**
- **LOCALLY MANUFACTURED**
- **SABS TESTING IN PROGRESS**



SPECIFICATION SUMMARY

Rated Power:	24W (12VDC)
Light output:	2910lm
Colour:	Warm White or Neutral White or Cool White
LED Technology:	Seoul LED
IP Rating:	IP65
Rated Lifetime:	> 80 000 HRS
Beam Angle:	60°vertical x 170°horizontal
Weight:	1.6 Kg
Dimensions:	100mm x 300mm x 105mm



SERIES 4 STREET LIGHTS

48 WATT

PRODUCT CODES

48STR12-S4

PRODUCT DESCRIPTION

48W LED Street Light CCR series 4 in an array of anodized aluminium extruded housing with a clear UV resistant ultra high impact poly-carbonate cover. The LED Street Light is a locally developed OEM design to replace the 100W S3 COB LED lights and a good substitute for the conventional 150W HID street light awarding the user with up to 67% energy cost savings and extended lifetime benefits. New CCR driverless technology eliminating the need for third party drivers. There is 100% output the moment the light is switched on, no warm-up or strike delays.

Mounting: Spigot entry 38-44mm Pipe
Surge and Lightning Protection Replaceable Fuse

- 5 YEAR GUARANTEE
- LOCALLY MANUFACTURED
- SABS TESTING IN PROGRESS



SPECIFICATION SUMMARY

Rated Power:	48W (12VDC)
Light output:	5820lm
Colour:	Warm White or Neutral White or Cool White
LED Technology:	Seoul LED
IP Rating:	IP65
Rated Lifetime:	> 80 000 HRS
Beam Angle:	60°vertical x 165°horizontal
Weight:	2.8 Kg
Dimensions:	200mm x 300mm x 105mm



SERIES 4 STREET LIGHTS

50 WATT

PRODUCT CODES

50STR220VAC

PRODUCT DESCRIPTION

50W LED Street Light CCR series 4 in an array of anodized aluminium extruded housing with a clear UV resistant ultra high impact poly-carbonate cover. The LED Street Light is a locally developed OEM design to replace conventional 125W HID street lights. The street light awards the user with up to 65% energy cost savings and extended lifetime benefits. New CCR driverless technology eliminating the need for third party drivers. There is 100% output the moment the light is switched on, no warm-up or strike delays.

Mounting: Spigot entry 38-44mm Pipe
Surge and Lightning Protection Replaceable Fuse

- 5 YEAR GUARANTEE
- LOCALLY MANUFACTURED
- SABS TESTING IN PROGRESS



SPECIFICATION SUMMARY

Rated Power:	50W (110VAC / 220VAC)
Light output:	4701lm
Colour:	Warm White or Neutral White or Cool White
LED Technology:	Seoul LED
IP Rating:	IP65
Rated Lifetime:	> 80 000 HRS
Beam Angle:	60°vertical x 170°horizontal
Weight:	2.7 Kg
Dimensions:	200mm x 300mm x 105mm



SERIES 4 STREET LIGHTS

75 WATT

PRODUCT CODES

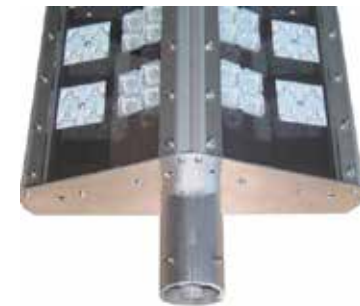
75STR220-DC

PRODUCT DESCRIPTION

75W LED Street Light CCR series 4 in an array of anodized aluminium extrusions with a clear UV resistant ultra high impact poly-carbonate cover. The LED Street Light is a locally developed OEM design to replace the 125W MV Street lights and a good substitute for the conventional 150W HPS street light awarding the user with up to 50% energy cost savings and extended lifetime benefits. Spiggot mounting 38-44mm pipe entry. New CCR driverless technology eliminating the need for third party drivers. There is 100% output the moment the light is switched on, no warm-up or strike delays.

Mounting: Spigot entry 38-44mm Pipe or U-bracket Surge and Lightning Protection Replaceable Fuse

- **5 YEAR GUARANTEE**
- **LOCALLY MANUFACTURED**
- **SABS TESTING IN PROGRESS**



SPECIFICATION SUMMARY

Rated Power:	75W (110VAC / 220VAC)
Light output:	6937lm
Colour:	Warm White or Neutral White or Cool White
LED Technology:	Seoul LED
IP Rating:	IP65
Rated Lifetime:	> 80 000 HRS
Beam Angle:	60°vertical x 170°horizontal
Weight:	3.5 Kg
Dimensions:	300mm x 300mm x 105mm



SERIES 4 STREET LIGHTS

96 WATT / 100 WATT

PRODUCT CODES

96STR12-S4

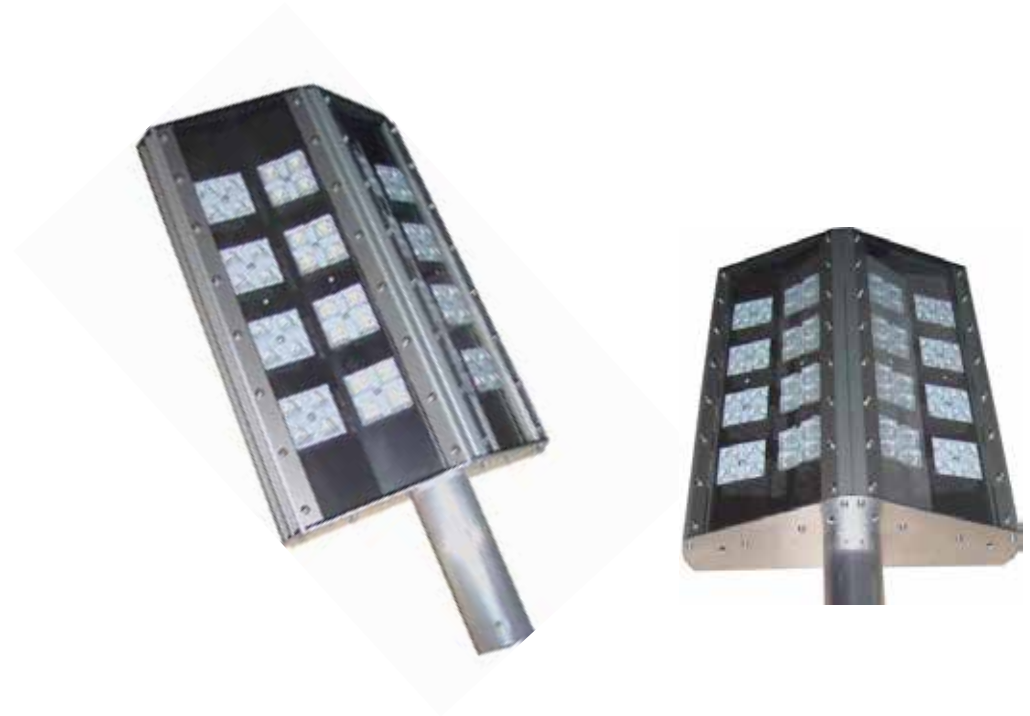
100STR220-DC

PRODUCT DESCRIPTION

96W / 100W LED Street Light CCR series 4 in an array of anodized aluminium extrusions with a clear UV resistant ultra high impact poly-carbonate cover. The LED Street Light is a locally developed OEM design to replace the 200W S3 COB LED lights and a good substitute for the conventional 400W metal halide flood light awarding the user with up to 75% energy cost savings and extended lifetime benefits. New CCR driverless technology eliminating the need for third party drivers. There is 100% output the moment the light is switched on, no warm-up or strike delays.

Mounting: Spigot entry 38-44mm Pipe
Surge and Lightning Protection Replaceable Fuse

- **5 YEAR GUARANTEE**
- **LOCALLY MANUFACTURED**
- **SABS TESTING IN PROGRESS**



SPECIFICATION SUMMARY

Rated Power:	96W (12VDC) 100W (110VAC / 220VAC)
Light output:	6937lm (96W) / 9402lm (100W)
Colour:	Warm White or Neutral White or Cool White
LED Technology:	Seoul LED
IP Rating:	IP65
Rated Lifetime:	> 80 000 HRS
Beam Angle:	60°vertical x 170°horizontal
Weight:	5 Kg
Dimensions:	400mm x 300mm x 105mm



SERIES 4 STREET LIGHTS

150 WATT

PRODUCT CODES

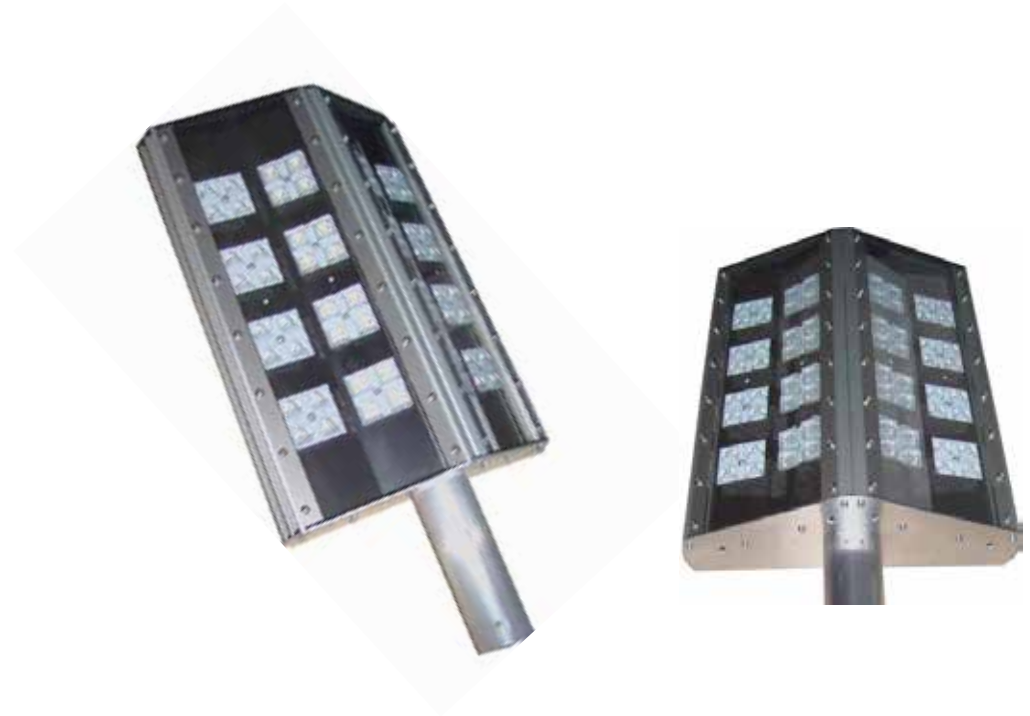
150STR-220

PRODUCT DESCRIPTION

150W LED Street Light CCR series 4 in an array of anodized aluminium extrusions with a clear UV resistant ultra high impact poly-carbonate cover. The LED Street Light is a locally developed OEM design to replace the 200W S3 COB LED lights and a good substitute for the conventional 400W metal halide street light awarding the user with up to 75% energy cost savings and extended lifetime benefits. New CCR driverless technology eliminating the need for third party drivers. There is 100% output the moment the light is switched on, no warm-up or strike delays.

Mounting: Spigot entry 38-44mm Pipe
Surge and Lightning Protection Replaceable Fuse

- **5 YEAR GUARANTEE**
- **LOCALLY MANUFACTURED**
- **SABS TESTING IN PROGRESS**



SPECIFICATION SUMMARY

Rated Power:	150W (110VAC / 220VAC)
Light output:	13953lm
Colour:	Warm White or Neutral White or Cool White
LED Technology:	Seoul LED
IP Rating:	IP65
Rated Lifetime:	> 80 000 HRS
Beam Angle:	60°vertical x 170°horizontal
Weight:	5 Kg
Dimensions:	500mm x 300mm x 105mm

