

# LED CEILING LIGHTS

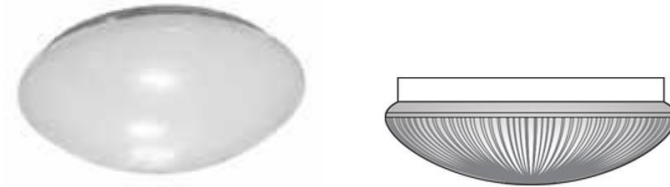
**RESELLERS OF OUR PRODUCTS ARE  
AVAILABLE NATION WIDE.**

FOR RESELLER QUERIES AND WHOLESALE PRICELISTS / DISCOUNTS  
PLEASE CONTACT OUR HEAD OFFICE.



## CEILING LIGHTS

### 9 WATT ROUND



#### PRODUCT CODES

9DOME220-CW

#### PRODUCT DESCRIPTION

9W LED Recessed Ceiling Light in a powder coated mild steel housing with an acrylic dome diffuser. The LED Ceiling Light is an economical low cost LED light to replace conventional “D” type fluorescent lights or “PL” type fluorescent lights. >50% energy cost savings and extended lifetime benefits. There is 100% output the moment the light is switched on, no warm-up or strike delays.

- **1 YEAR GUARANTEE**
- **LOCALLY MANUFACTURED**
- **SABS TESTING IN PROGRESS**

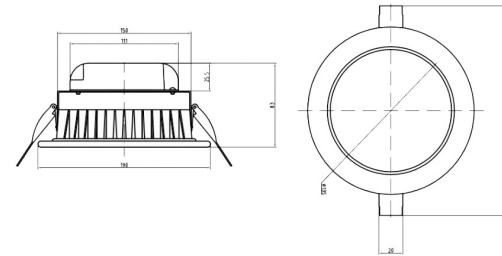
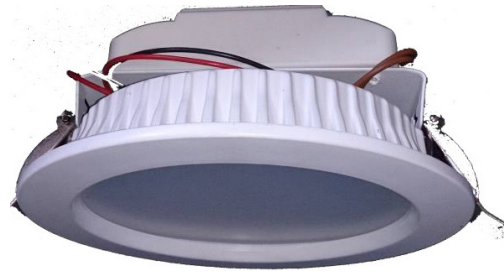
#### SPECIFICATION SUMMARY

Rated Power:	9W (110VAC / 220VAC)
Light output:	900lm
Colour:	Warm White or Neutral White or Cool White
LED Technology:	Epistar LED
IP Rating:	IP20
Rated Lifetime:	> 50 000 HRS
Beam Angle:	140°
Weight:	0.8 Kg
Dimensions:	250mm (d) x 120mm (h)



## CEILING LIGHTS

### 12 WATT - 30 WATT ROUND



#### PRODUCT CODES

12CEI220-CW / 12CEI220-DIM-C

18CEI220-CW / 18CEI220-DIM-C

30CEIL220-PW / 30CEIL220-DIM-C

#### PRODUCT DESCRIPTION

The LED Recessed Ceiling Light in a die cast powder coated aluminium housing with a frosted poly-carbonate cover. The LED Ceiling Light is a locally developed OEM design to replace the PL26 CFL ceiling lights awarding the user with up to 67% energy cost savings and extended lifetime benefits. New CCR driverless technology eliminating the need for third party drivers. There is 100% output the moment the light is switched on, no warm-up or strike delays.

- **5 YEAR GUARANTEE**
- **LOCALLY MANUFACTURED**
- **SABS TESTING IN PROGRESS**

#### SPECIFICATION SUMMARY

Rated Power:	12W - 30W (110VAC / 220VAC)	
Light output:	1000lm (12W)	1800lm (30W)
	1300lm (18W)	
Colour:	Warm White or Neutral White or Cool White	
LED Technology:	Seoul LED	
IP Rating:	IP44	
Rated Lifetime:	> 80 000 HRS	
Beam Angle:	140°	
Weight:	0.5 Kg	
Dimensions:	140mm (d) x 75mm (h) (12W)	
	190mm (d) x 83mm (h) (18W)	
	230mm (d) x 83mm (h) (30W)	



## CEILING LIGHTS

### 25 WATT PANEL LIGHTS

#### PRODUCT CODES

25CEIL600

#### PRODUCT DESCRIPTION

600 x 600 25W LED Recessed Ceiling Light in an aluminium extruded housing with a diffused poly-carbonate cover. The LED Ceiling Light is a locally developed OEM design to replace the conventional 3 x 18W fluorescent tube fittings. 54% energy cost savings and extended lifetime benefits. New driverless technology eliminating the need for third party drivers. There is 100% output the moment the light is switched on, no warm-up or strike delays.

- **5 YEAR GUARANTEE**
- **LOCALLY MANUFACTURED**
- **SABS TESTING IN PROGRESS**



#### SPECIFICATION SUMMARY

Rated Power:	25W (110VAC / 220VAC)
Light output:	2375lm
Colour:	Warm White or Neutral White or Cool White
LED Technology:	Seoul LED
IP Rating:	IP44
Rated Lifetime:	> 80 000 HRS
Beam Angle:	140°
Weight:	2.3 Kg
Dimensions:	600mm x 600mm x 40mm (h)



## CEILING LIGHTS

### 50 WATT - 60 WATT PANEL LIGHTS

PRODUCT CODES
50CEIL1200
60CEIL1200
PRODUCT DESCRIPTION
1200 x 600 50W LED Recessed Ceiling Light in an aluminium extruded housing with a diffused poly-carbonate cover. The LED Ceiling Light is a locally developed OEM design to replace the conventional 3 x 36W fluorescent tube fittings. 56% energy cost savings and extended lifetime benefits. New driverless technology eliminating the need for third party drivers. There is 100% output the moment the light is switched on, no warm-up or strike delays.
<ul style="list-style-type: none"> <li>● <b>5 YEAR GUARANTEE</b></li> <li>● <b>LOCALLY MANUFACTURED</b></li> <li>● <b>SABS TESTING IN PROGRESS</b></li> </ul>



SPECIFICATION SUMMARY	
Rated Power:	50W - 60W (110VAC / 220VAC)
Light output:	5750lm (50W) / 6600lm (60W)
Colour:	Warm White or Neutral White or Cool White
LED Technology:	Seoul LED
IP Rating:	IP44
Rated Lifetime:	> 80 000 HRS
Beam Angle:	140°
Weight:	4.5 Kg
Dimensions:	1200mm x 600mm x 40mm



## CEILING LIGHTS

16 WATT -

48 WATT LINEAR LIGHTS

### PRODUCT CODES

16LP220-CCR

32LP220-CCR

48LP220-CCR

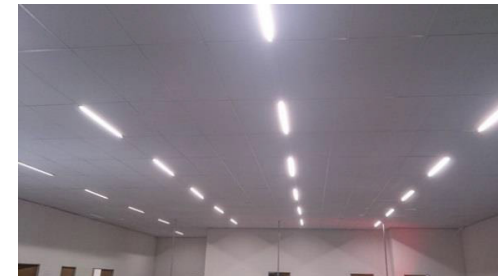
### PRODUCT DESCRIPTION

This design features an anodised aluminium extrusion and poly-urethane resin or prismatic diffuser. Integrated LED Driver. Indoor & outdoor applications. Available in wide angle diffused version. Aluminium mounting brackets. A suitable and handy light for various applications. There is 100% output the moment the light is switched on, no warm-up or strike delays.

#### Typical applications:

Cold rooms, Corridor Lights, Pathway lights, Under counter lights.

- **5 YEAR GUARANTEE**
- **LOCALLY MANUFACTURED**
- **SABS TESTING IN PROGRESS**



### SPECIFICATION SUMMARY

Rated Power:	16W - 48W (220VAC)	
Light output:	1408lm (16W)	4224lm (48W)
	2816lm (32W)	
Colour:	Warm White or Neutral White or Cool White	
LED Technology:	Seoul LED	
IP Rating:	IP44	
Rated Lifetime:	> 80 000 HRS	
Beam Angle:	Diffused 140°	
Weight & Dimensions:	600mm x 48mm x 13mm, 0.5 Kg (16W)	
	1200mm x 48mm x 13mm, 1 Kg (32W)	
	1800mm x 48mm x 13mm, 1.3 Kg (48W)	



# CEILING LIGHTS

## 60 WATT LINEAR LIGHTS WITH EMERGENCY BACK-UP

### PRODUCT CODES

60VCEIL220-EME

### PRODUCT DESCRIPTION

This design features anodised aluminium extrusions and polycarbonate lens cover. Integrated LED Driver. Indoor applications. Available in wide angle diffused version. Stainless steel mounting bracket. A suitable replacement for double 58 Watt Fluorescent. 50% POWER SAVING! 10,5 Watt emergency back-up light allowing 90 minutes back-up time. There is 100% output the moment the light is switched on, no warm-up or strike delays.

#### Typical applications:

Offices, Conveyor corridors, Domestic, Low bay lights

Independent 10,5 Watt LED Emergency Light with 90 minutes back-up time.

- 5 YEAR GUARANTEE
- LOCALLY MANUFACTURED
- SABS TESTING IN PROGRESS



### SPECIFICATION SUMMARY

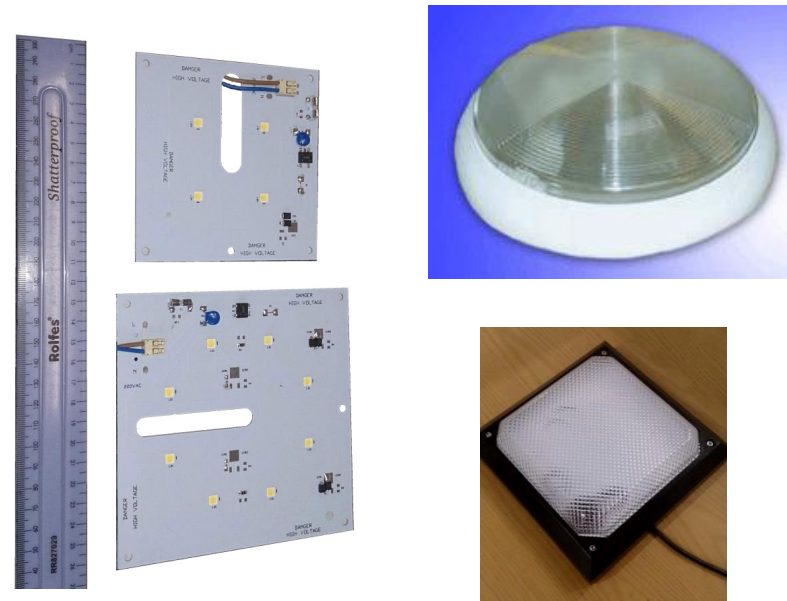
Rated Power:	60W (220VAC)
Light output:	5100lm
Colour:	Warm White or Neutral White or Cool White
LED Technology:	Osram
IP Rating:	IP20
Rated Lifetime:	> 80 000 HRS
Beam Angle:	175°on the sides & 140°on the ends
Weight:	3.5 Kg
Dimensions:	1200mm x 105mm x 70mm



# REPLACEMENT / RETROFIT PCB

## 9 WATT / 18 WATT

PRODUCT CODES	
9VES-MCPCB / 9VES-MCPCB12	
18BHVES110 / 18BHVES220	
PRODUCT DESCRIPTION	
<p>These modules feature an aluminium based PC board suitable as a retrofit unit for conventional bulkhead lights. Integrated LED Driver. Will fit in most "2D" fittings. Available as wide angle only. A suitable replacement for 2 x 26W PL lamps, 2 x 60 W halogen lamps or 16-28W D-lamp. Up to 80% POWER SAVING! There is 100% output the moment the light is switched on, no warm-up or strike delays.</p>	
<p><b>Typical applications:</b> Retrofit for conventional bulkhead lights</p>	
<ul style="list-style-type: none"> <li>● 5 YEAR GUARANTEE</li> <li>● LOCALLY MANUFACTURED</li> <li>● SABS TESTING IN PROGRESS</li> </ul>	



SPECIFICATION SUMMARY	
Rated Power:	9W (220VAC / 12VDC) 18W (110VAC / 220VAC)
Light output:	810lm (9W 220VAC) 1170lm (9W 12VDC) 1620lm (18W)
Colour:	Warm White or Neutral White or Cool White
LED Technology:	Seoul LED
IP Rating:	Adopts the IP rating of the housing
Rated Lifetime:	> 80 000 HRS
Beam Angle:	140°
Weight:	<0.1 Kg
Dimensions:	110mm x 110mm (9W) 140mm x 140mm (18W)

